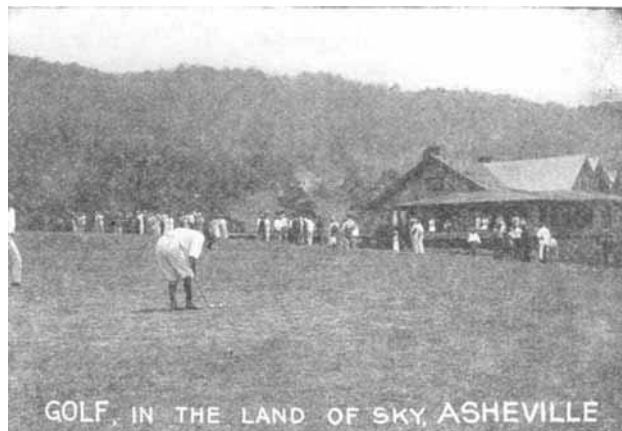


Fishing and golfing around Asheville will appeal to delegates inclined to these sports. While the former cannot be obtained in the immediate neighborhood of the city, still a few miles' motor ride will bring one to Lake Junaluska, with a ten-mile shore line; Lake Summit, fourteen-mile shore line; and Lake Catawba, with a one hundred and sixty-four mile shore line. In addition there are numerous streams and brooks where mountain trout and bass will thrill the most



blasé angler. As for golf, there are two eighteen hole courses within convenient distance of hotel headquarters. The Asheville Country Club links are 6000 yards in length, while those of the Biltmore Forest Club, covering 130 acres, stretch out 6400 yards from the first tee to the "Nineteenth Hole."

In the foregoing nothing has been said as to the serious side of the approaching convention. It is still too early to announce details concerning the deliberative sessions, but in a general way it may be promised that the Asheville meeting will measure up to those of previous years not only in the amount of constructive work accomplished but in the character of such work.

CHAPEL HILL, N. C., May 16, 1923.

THE PROGRESS OF THE A. P. H. A. REORGANIZATION PLAN.

BY WILLIAM B. DAY.

The fate of the plan adopted at the Cleveland meeting for extending the usefulness of the American Pharmaceutical Association through a closer affiliation with other pharmaceutical organizations, both state and national, is now in the hands of the state associations. It was thought best to present the plan in full to the state bodies before making any special effort to secure the coöperation of the other national organizations, for the reason that it was realized that favorable action by the state associations was the first requisite to the success of the plan.

The state associations which have held their 1923 meetings in the early months of the year have without exception endorsed the plan and approved of affiliation. This includes the state pharmaceutical associations of Minnesota, Iowa, Arkansas, Kansas, Louisiana and Oklahoma. Through their respective executive committees, Illinois and Maryland have also endorsed the plan—endorsements which will be ratified at their annual conventions. As the action in all states where the annual meetings have been held has been favorable, the prospects for securing the adoption of the plan at the state conventions, many of which are held this month, seem excellent and the outlook is most encouraging.

Some problems have arisen, notably the difficulty in securing a ten per cent. membership in the American Pharmaceutical Association, at once, in those states where membership in the state association is a requirement of the pharmacy law—that is, where every registered pharmacist on the payment of his registration fee becomes automatically a member of the state association. Possibly it will become necessary to modify the ten per cent. requirement in these states.

In connection with the state affiliation, membership campaigns are being instituted. It is realized, however, that the mere fact that the state association has affiliated on the ten per cent. basis will not in itself greatly increase the membership of the American Pharmaceutical Association at this time. Before a much larger number of new members can be attracted to the Association, it will be necessary to put the reorganization plan into effect and make evident its advantages to state association members.

The problem is a big one. It is not reasonable to expect that it will be rapidly worked out. The immediate results that may be confidently expected are a larger attendance of delegates from the state associations; a greater interest in the American Pharmaceutical Association, especially, in its House of Delegates, and a greater effectiveness in the work that the Association has undertaken to do for pharmacy as a whole. This work must necessarily be done in a large measure through the publications of the Association.

The new YEAR BOOK recently mailed to the members is a veritable treasure-house of information useful to pharmacists. Everyone interested in pharmacy, in any of its divisions, will find portions of the YEAR BOOK that will strongly appeal to him.

The JOURNAL is also developing. It shows a decided increase in the number of original papers this year, compared with last, and its circulation is steadily growing as the membership enlarges.

To gain and to intensify the interest of the members of the state associations in the American Pharmaceutical Association means the expenditure of both energy and time but these interests run so closely parallel with those of the parent association that ultimate success may be looked for.

A most encouraging feature of the whole movement is the cordial support that has been given to the reorganization plan by the pharmaceutical publications of the country. Practically every one of these has published in full the preliminary outline of the reorganization plan and a large majority have commented on it editorially. While not minimizing the difficulties to be overcome, these editorial comments have been uniformly favorable.

The possibilities of the plan are great. The various pharmaceutical organizations have much in common and by development along lines of contact, without interfering in any respect with the individual field occupied by each of these organizations, it should be possible to inaugurate a great coöperative movement for pharmacy that will promote its professional and scientific interests without neglecting its mercantile and legal side.

Above all, it should be borne in mind that the proposed plan is in process of development and gives promise of a useful future, if wisely guided and aided in its growth.

ABSTRACT OF REPORT OF THE TREASURER OF THE AMERICAN PHARMACEUTICAL ASSOCIATION.*

JANUARY 1, 1922, TO DECEMBER 31, 1922.

E. F. KELLY, BALTIMORE, MD.

Receipts.

St. Louis City 4% Registered Bonds.....	\$ 10,000.00	
Cash in Boston Penny Savings Bank.....	16,335.03	
Cash in International Bank of St. Louis.....	10,133.72	
Balance January 1, 1922.....		\$ 36,468.75
Annual Dues and Journal 1920.....	5.00	
Annual Dues and Journal 1921.....	85.00	
Annual Dues and Journal 1922.....	8,713.25	
Annual Dues and Journal 1923.....	5,997.00	
Annual Dues and Journal 1924.....	17.00	
Annual Dues only 1922.....	128.00	
Annual Dues only 1923.....	80.00	15,025.25
Interest on St. Louis City Registered Bonds.....		400.00
Interest on Deposit National Exchange Bank of Baltimore.....		184.43
Interest on Deposit Boston Penny Savings Bank.....		743.34
Bank Exchange.....		.40

* Complete report will be printed in Volume 11 of the YEAR BOOK, A. PH. A.